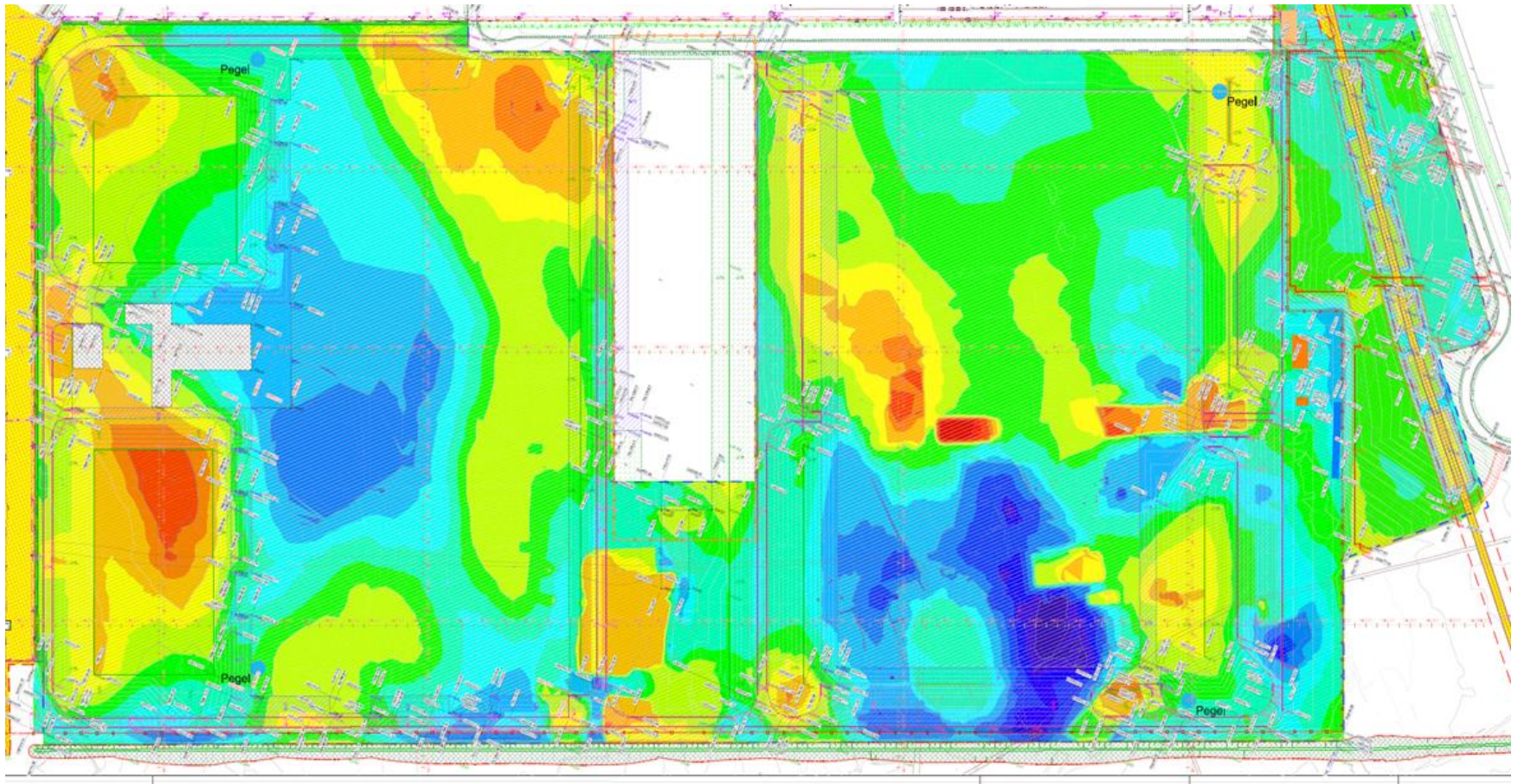


## BIM in integrated construction

BIM will become general standard for building projects of the federal government in Germany in the private Sektor its standard already.

Landscape arcitects need to get fit, to get in contact to BIM very soon.





# BIM in integrated construction

Can individual processing methods be preserved by this for long term?  
 Not everything which is technically possible, makes sense in actually applying it.  
 Data reduction is needed to get things done in time.



BF/P2 - Rohboden (Földön)

Elevation			
Number	Minimum	Elevation	Maximum
1		-4.00	
2		-3.00	
3		-2.00	
4		-1.00	
5		0.00	
6		1.00	
7		2.00	
8		3.00	
9		4.00	
1C		5.00	

RFB 111.50 PP - Rohboden (Földön)

Elevations			
Number	Minimum	Elevation	Maximum
1		-1.00	
2		0.00	
3		1.00	

RFB 111.40 - 2 P2 - Rohboden (Földön)

Elevations			
Number	Minimum	Elevation	Maximum
1		-1.00	
2		0.00	

RFB 111.40 - 1 P2 - Rohboden

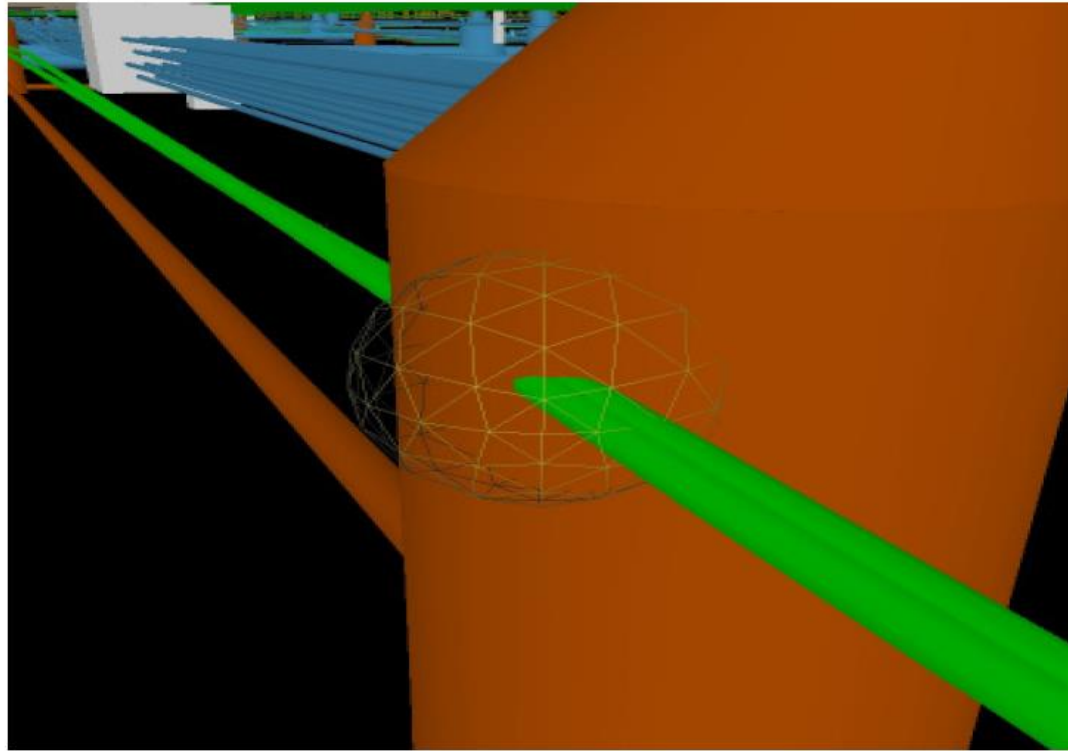
Elevations			
Number	Minimum	Elevation	Maximum
1		-2.00	
2		-1.00	
3		0.00	

## BIM in integrated construction

Models in early project stages have to be as simple as possible



## BIM in integrated construction



Laufende-Nr.: 4

Beschreibung: im4\_ia1\_008\_\_\_Trink-/Kaltwasserleitung in Schacht

Gewerk 1 Verantwortlich 1: N.N.

Gewerk 1 Verantwortlich 2: N.N.

Gewerk 2 Verantwortlich 1: Fa. Fact

Gewerk 2 Verantwortlich 2: Hr. Schurz

Geschoss: EG

Achse: F/1 westl. Geb 40

Sicht nach: ->S

## Everything in a model?

Data from the landscape in between buildings or infrastructure are often visualized for presentation purposes in earlier project phases. Yet they are often not continued in the model based planning.

Landscape should be involved into BIM to be an important part of the digital Model

The speed of a project process has been steadily increasing, often justified by a lack of time and a tight budget. Key changes keep taking place during the planning, even in later in the Project.

Today a growing number of planners are involved in projects, therefore data exchange needs to be efficient.

Planning approaches for all surfaces are synchronized and optimized with each other. The contributions of other planning partners have to be taken into consideration.

Planning approaches for all surfaces are synchronized and optimized with each other. The contributions of other planning partners have to be taken into consideration.

Do landscape architects have to adapt to working as the “smaller“ partner only or do they have more liberty and opportunities in undertaking projects than largescale technical trades have?

Through continuing and advanced further training of differently skilled employees, landscape architecture can influence the design and specifications of the work process with BIM also as a small trade.

This could work if we build professional competence for model-based planning thereby having a voice in the shaping of BIM in our project.

Such a competent contribution to projects will make a difference in the way we apply and involve ourselves.



Everything in a model?

EISENMOORBAD BAD SCHMIEDEBERG - KUR - GMBH

# NEUBAU GRADIERWERK

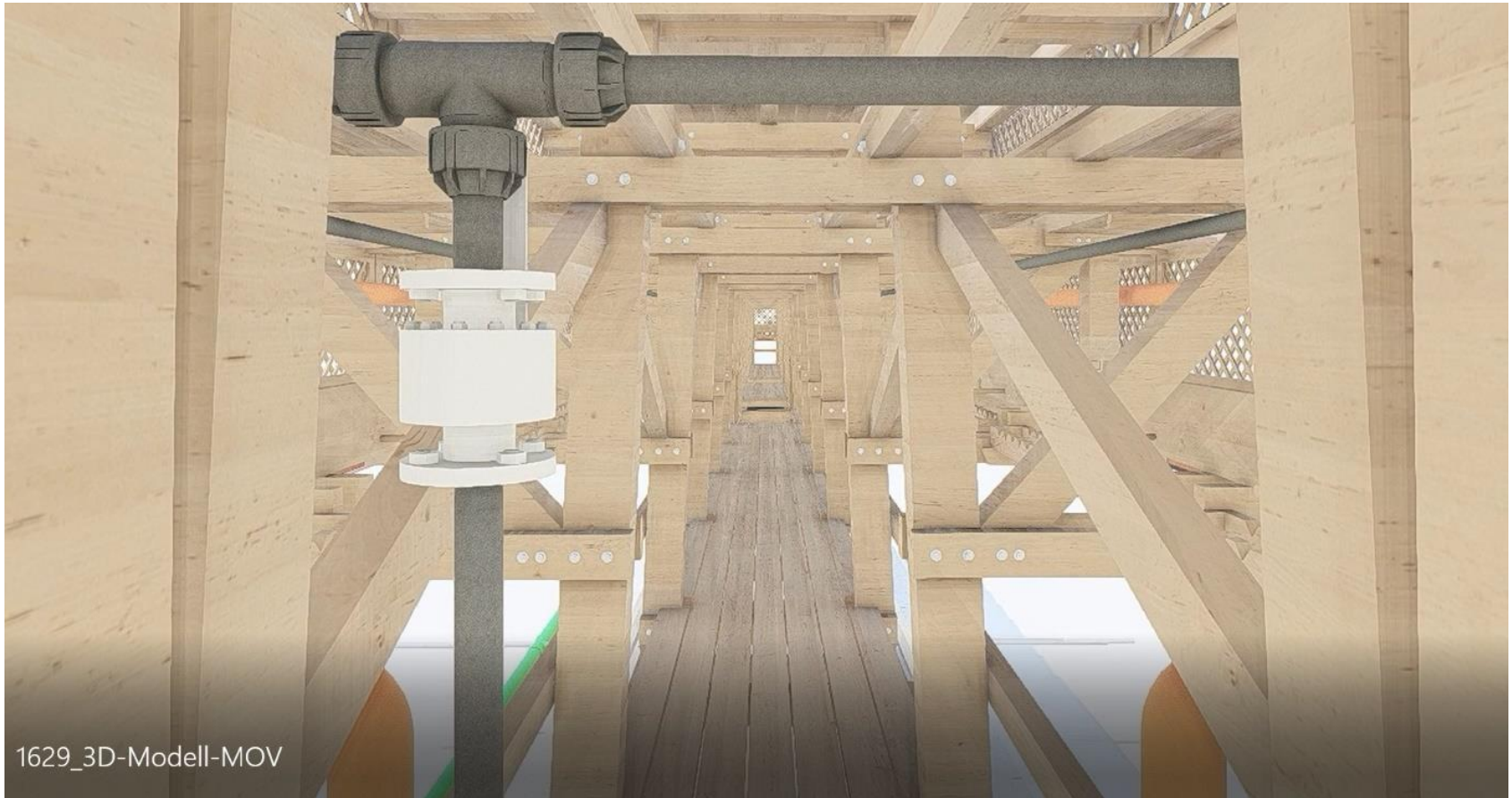
REALISIERUNGSZEITRAUM 2020/2021



gruen fuer stadt + leben

clausen landschaftsarchitekten  
gruen fuer stadt + leben  
kochstraße 28 / 04275 leipzig  
0341 6 888 000 / info@gfsl.de

## Everything in a model?



1629\_3D-Modell-MOV

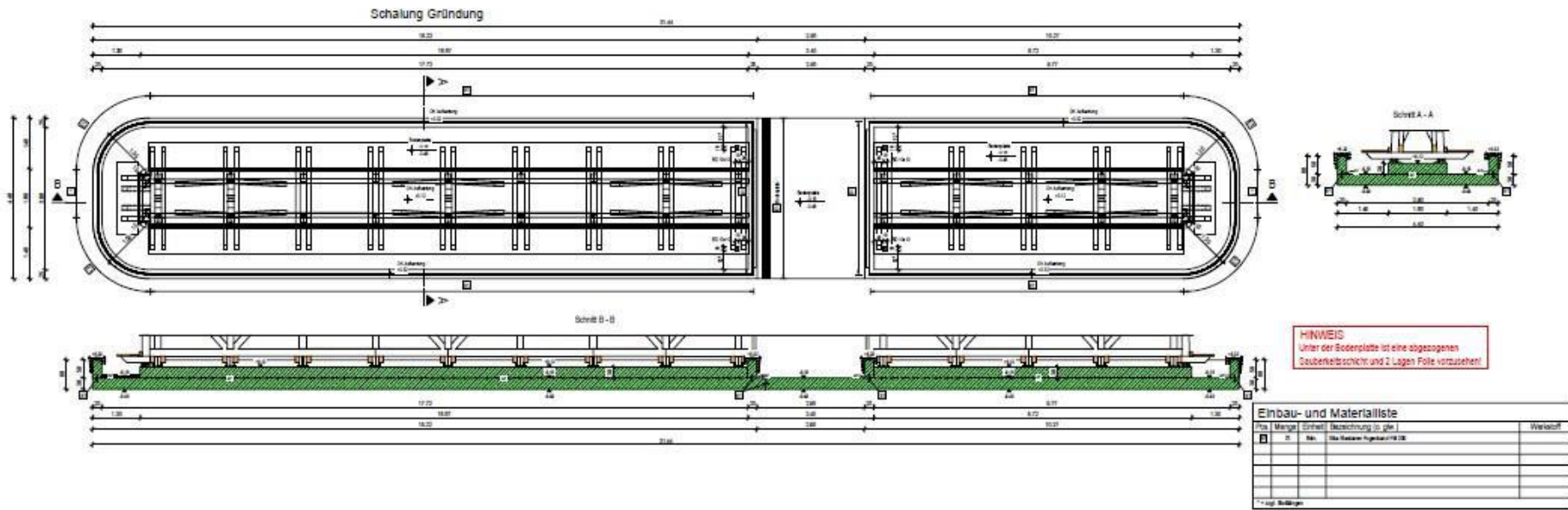


# Everything in a model?

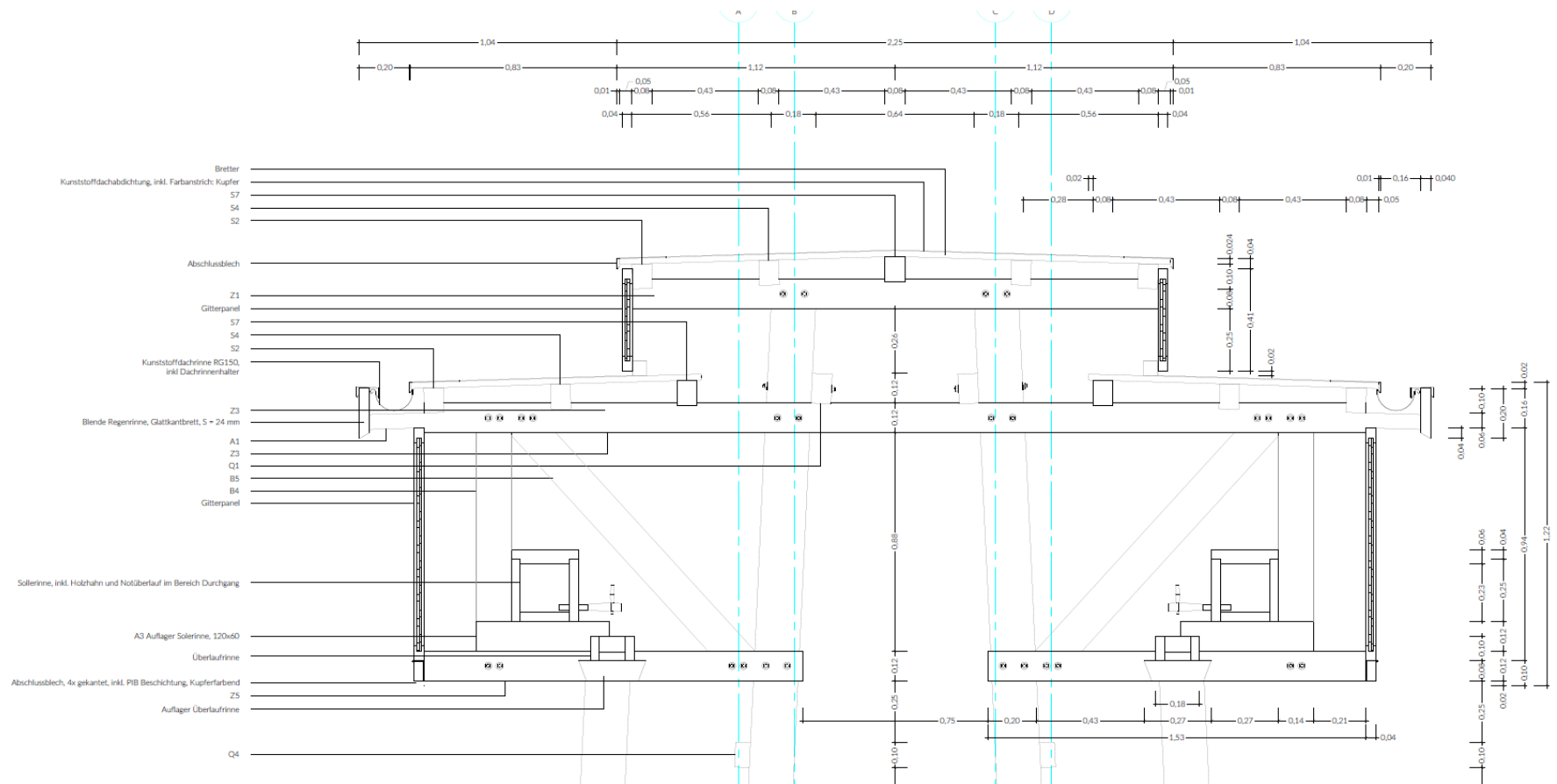




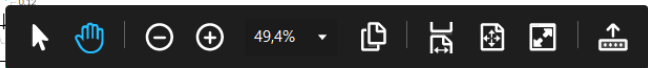
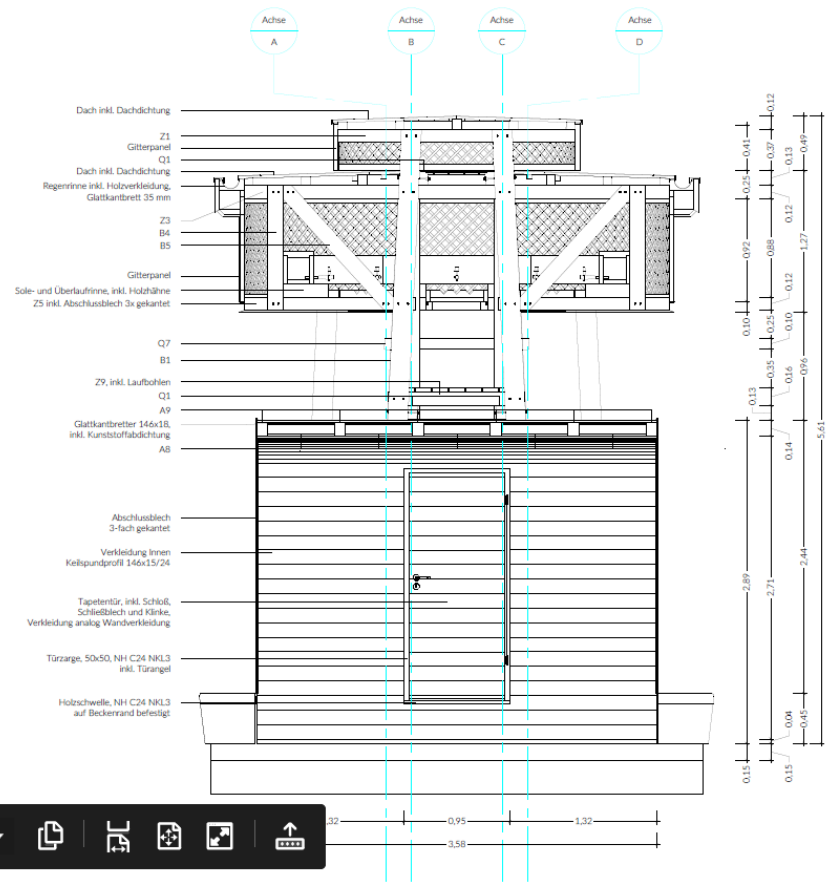
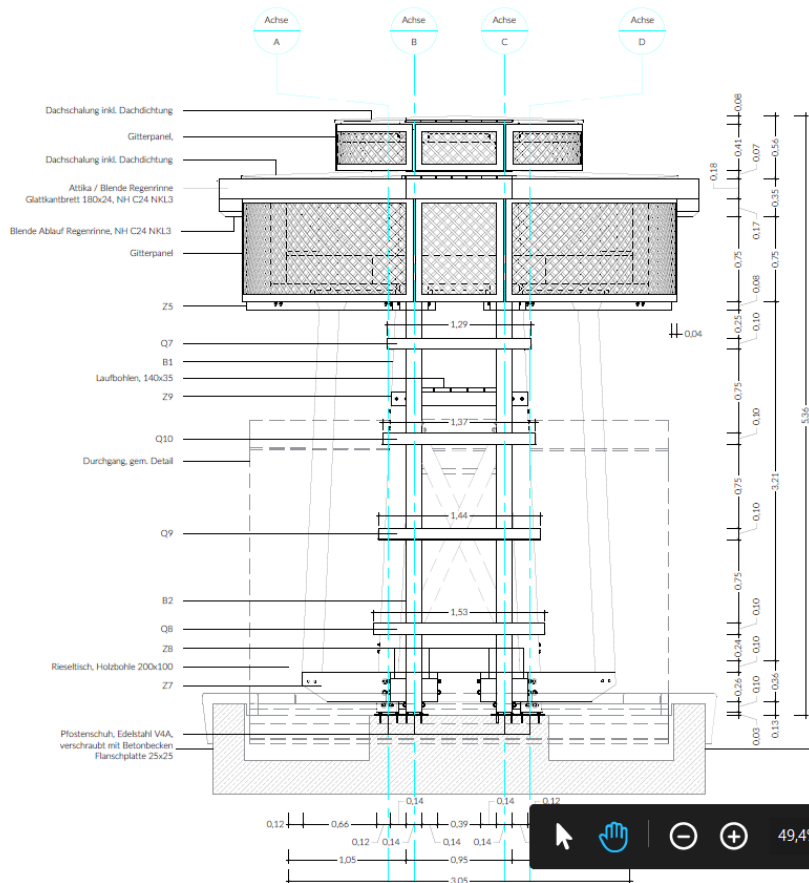
# Everything in a model?



# Everything in a model?

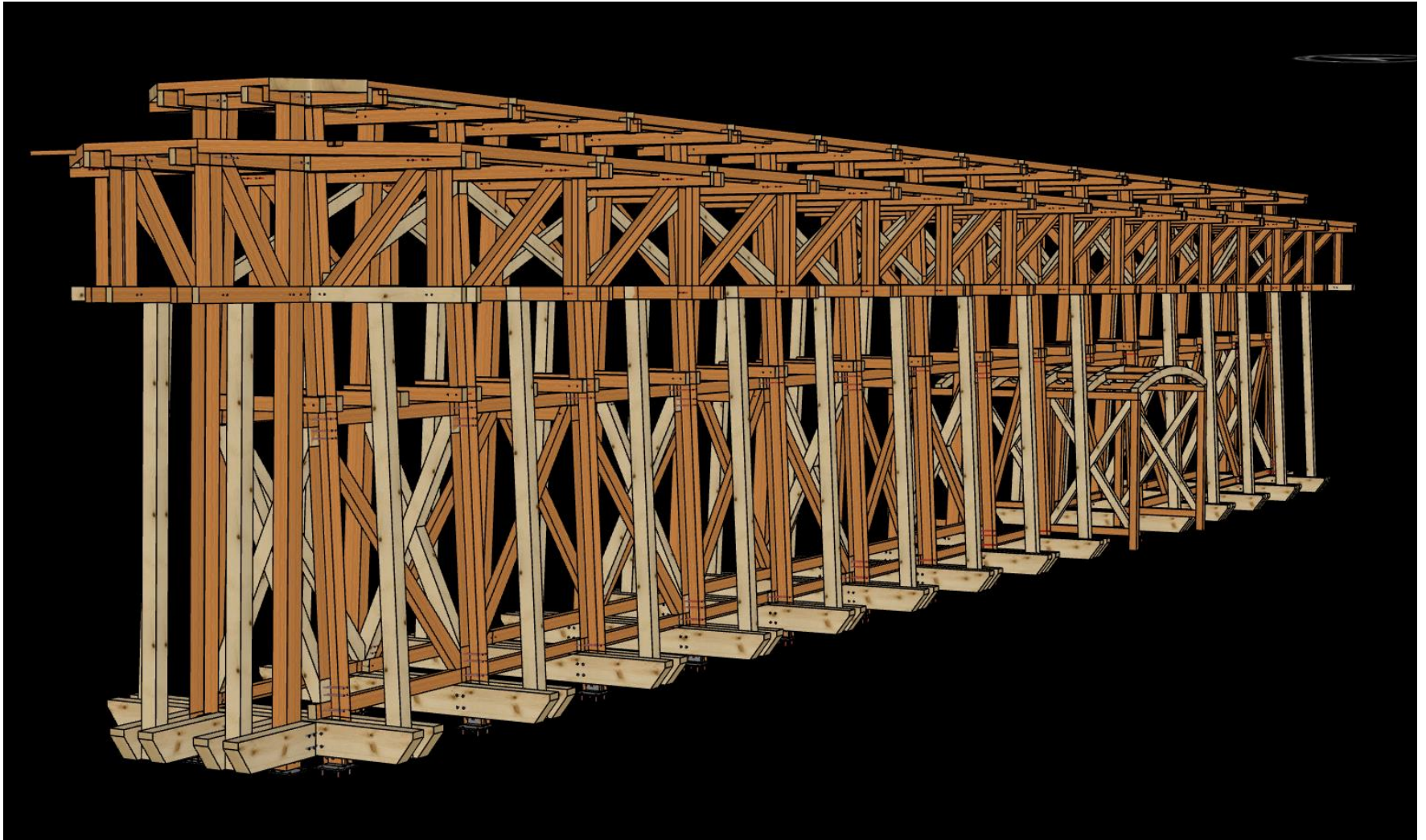


# Everything in a model?

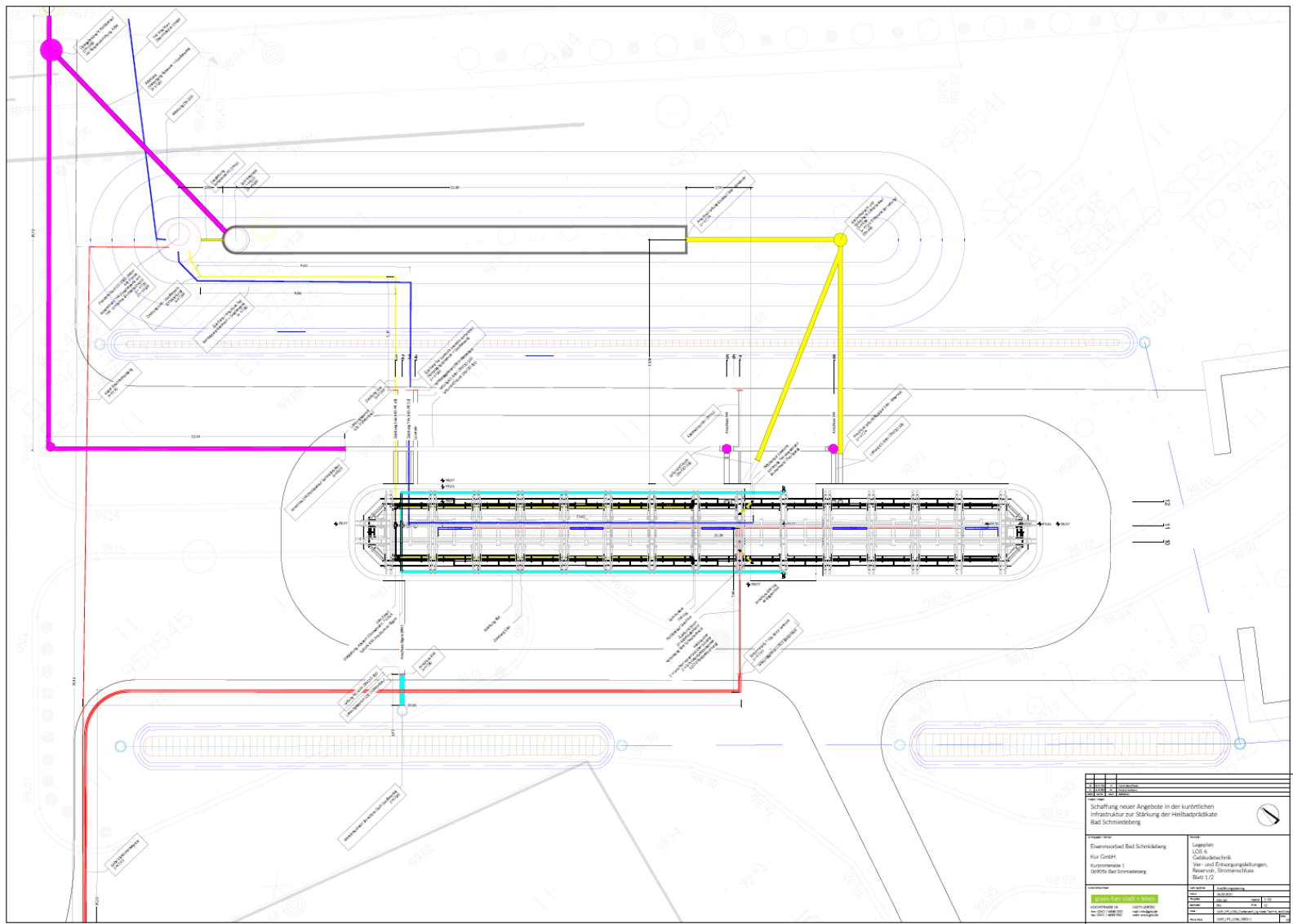




## Everything in a model?



# Everything in a model?





## Everything in a model?



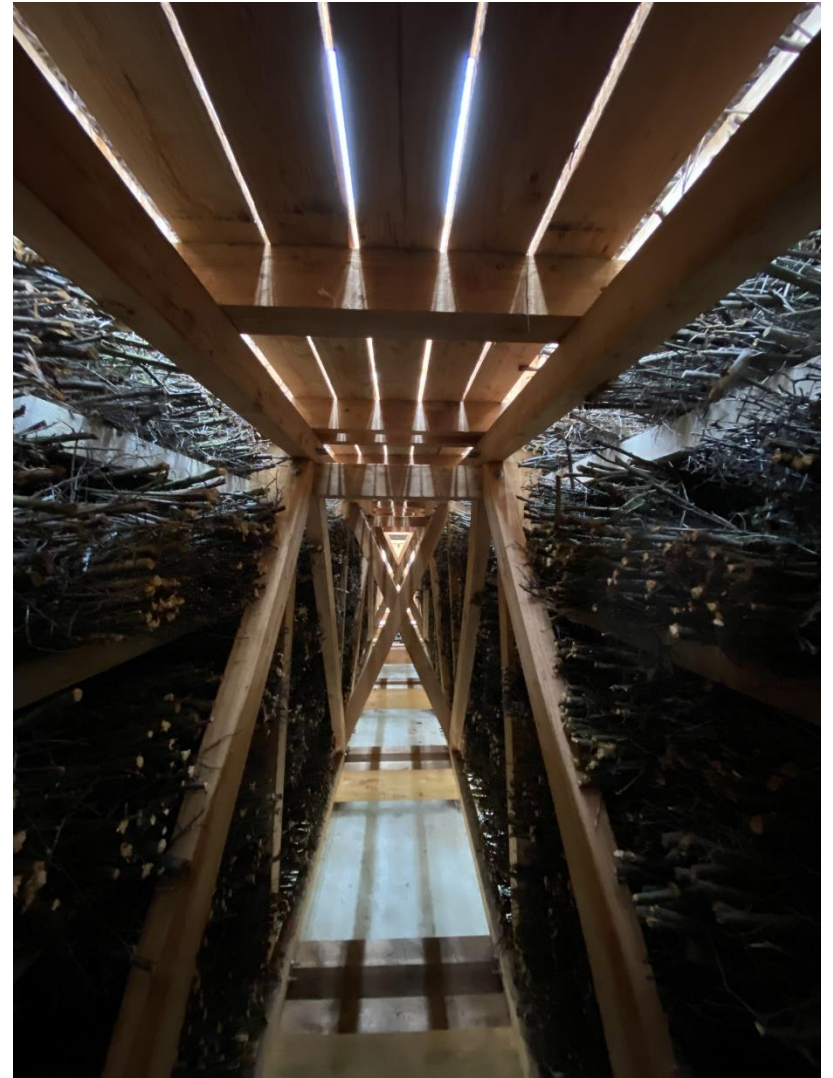


## Everything in a model?





## Everything in a model?





## Everything in a model?

